



HURRICANE HANNA BRIEFING

10:30 PM CT

Saturday, July 25, 2020

Prepared by: Melissa Huffman, WFO Corpus Christi

What has changed: Flash flood threat continues overnight.
Hanna has made landfall.

Disclaimer: The information contained within is time-sensitive. View latest information at www.hurricanes.gov.



- Hanna made two landfalls earlier this afternoon on Padre Island and Kenedy County
 - Hanna continues to move south, but Tropical-Storm-Force winds remain across much of the Coastal Bend and a Tropical Storm Warning is in effect
- Main concerns with Hanna tonight will be heavy rain threat in bands, gusty winds, storm surge, and brief tornado/waterspout threat
- Still have to keep an eye on the tropics after Hanna

Active Watches and Warnings

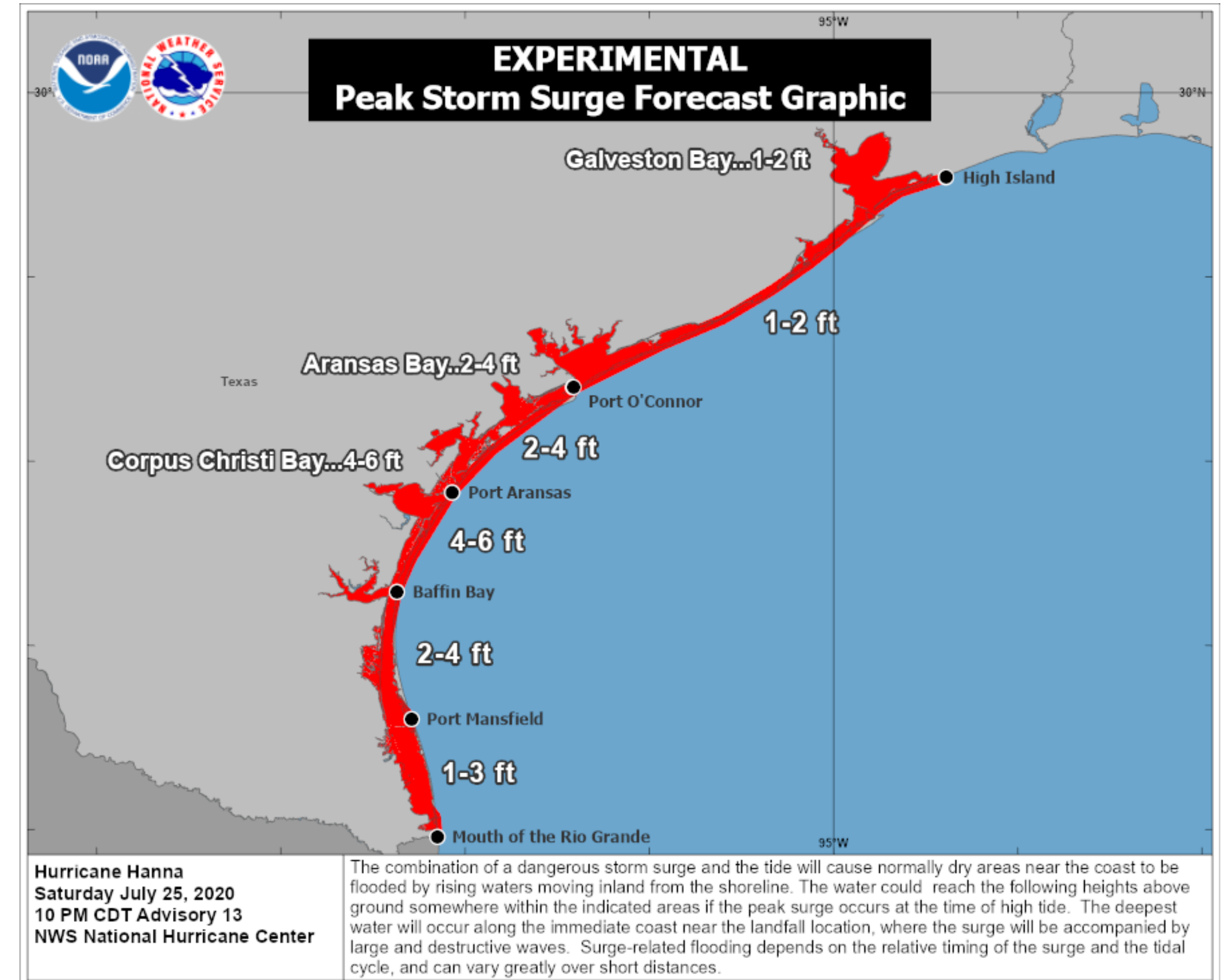
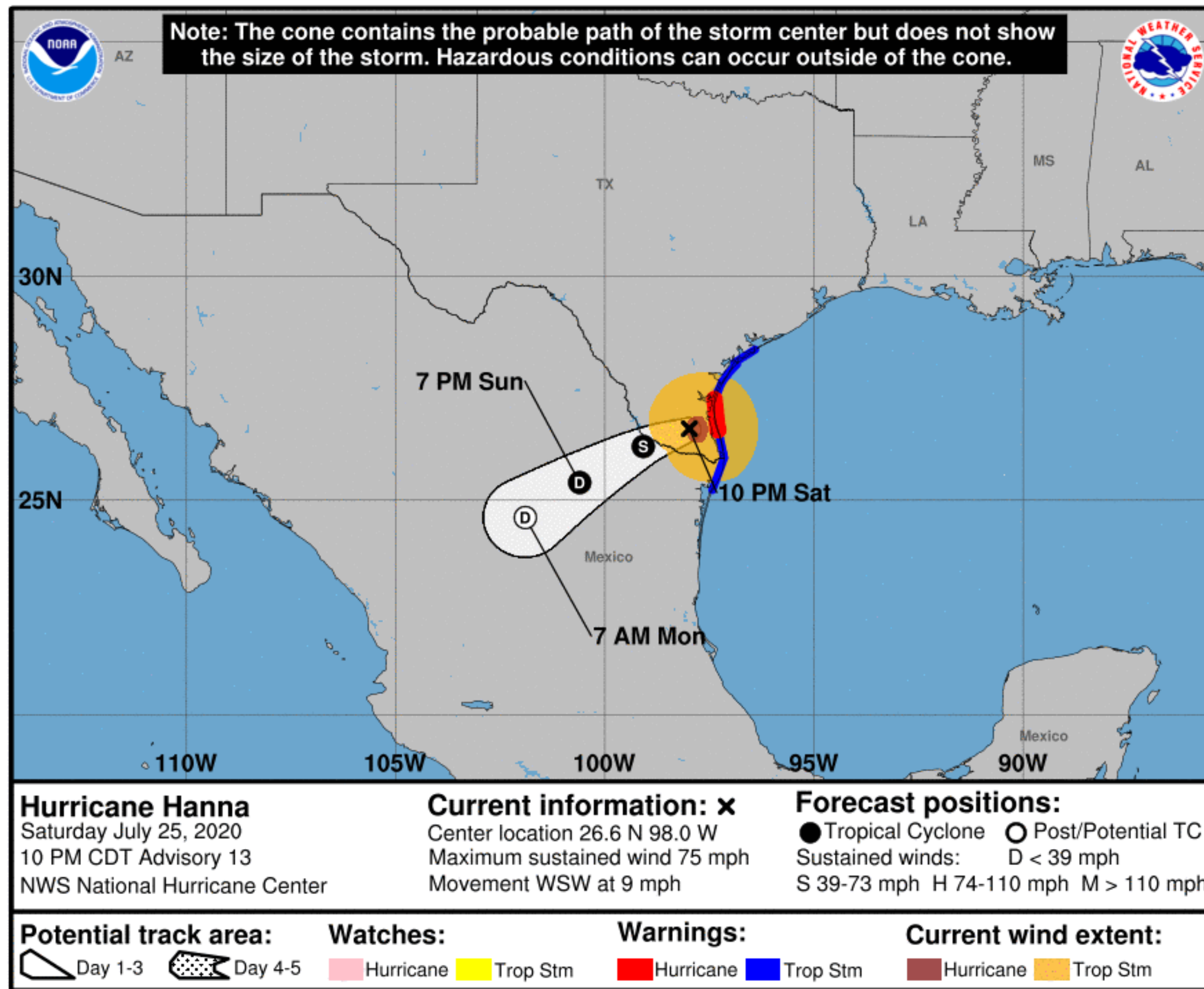
- A Tropical Storm Warning is in effect from Baffin Bay to Port O'Connor
 - Victoria and Goliad Counties have been removed from the warning
- A Flash Flood Watch remains in effect for most of South Texas
- A Storm Surge Warning remains in effect from Port Mansfield to Sargent

Situation Overview

Hurricane Hanna



Corpus Christi
WEATHER FORECAST OFFICE



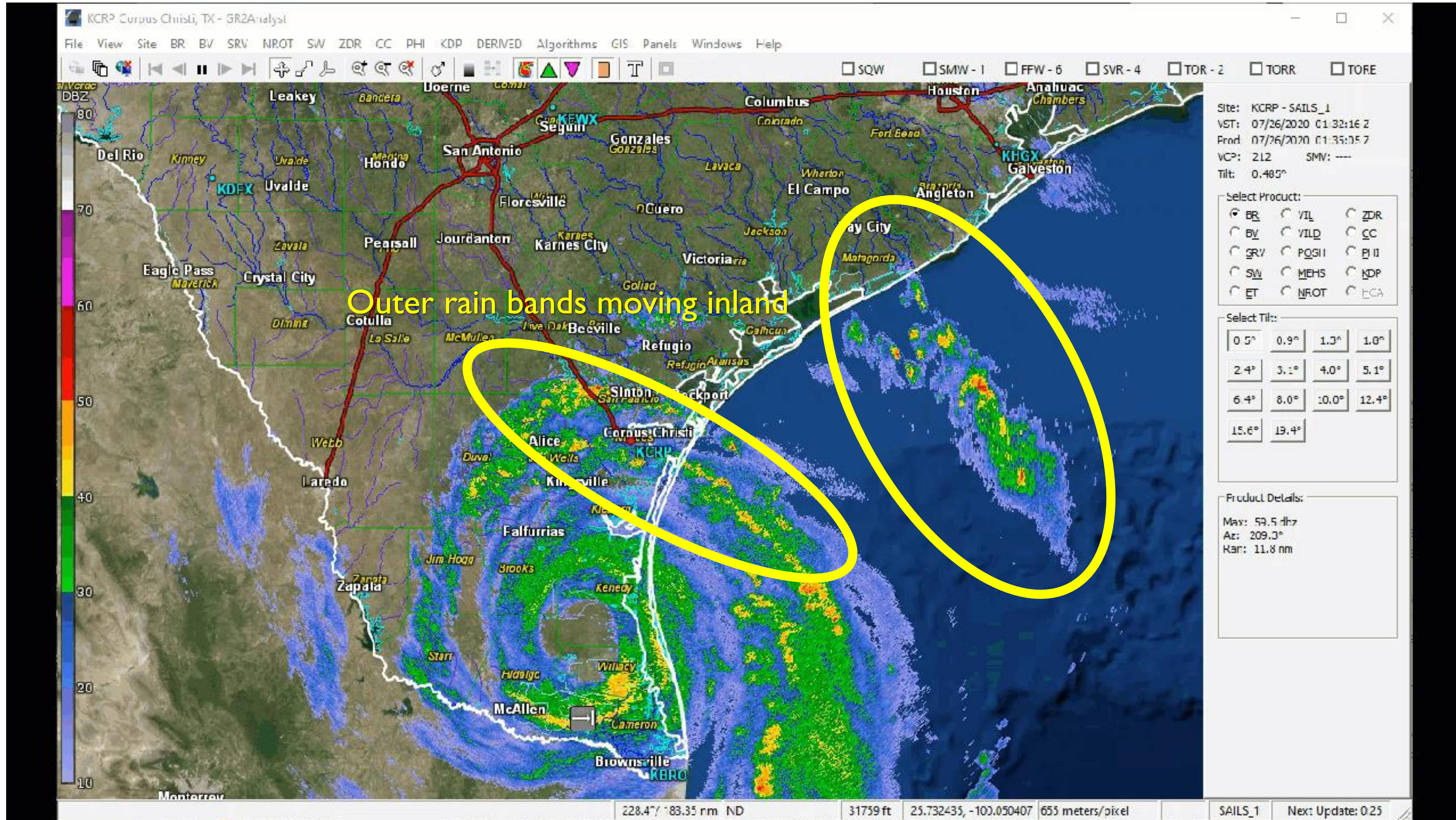
- Hanna has made landfall, will continue moving south. Tropical-storm-force winds will continue through early Sunday morning across much of the Coastal Bend
- Outer rain bands and storm surge will also remain a concern

Radar from 9:30 PM

Hurricane Hanna



Corpus Christi
WEATHER FORECAST OFFICE



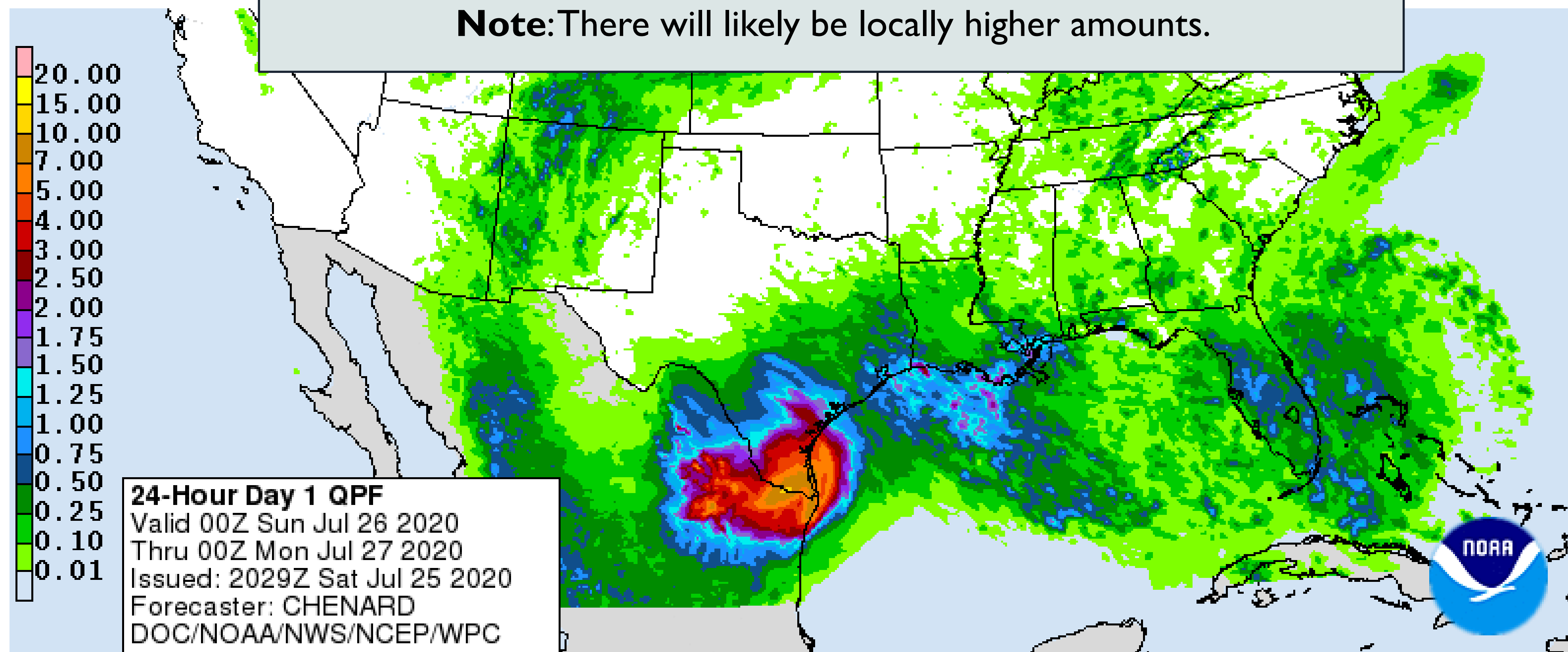
Storm Total Rainfall – Through Sunday



Corpus Christi
WEATHER FORECAST OFFICE

Hurricane Hanna

Note: There will likely be locally higher amounts.



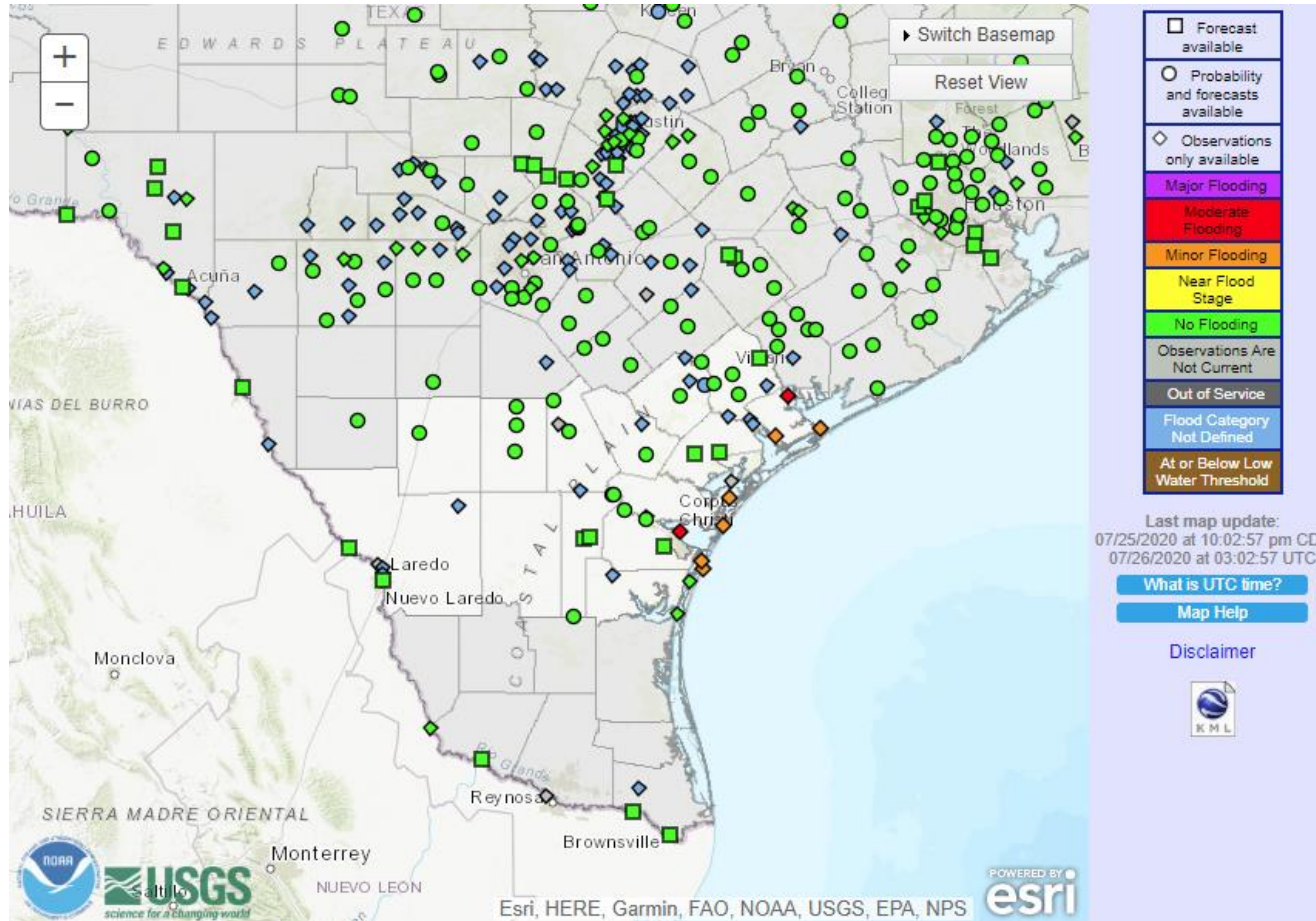
- Tonight: Heavy rain threat persists as rain bands move across South Texas
 - 2 to 5” possible overnight, highest amounts across Nueces and Kleberg Counties.
- Hanna Event Total: 5 to 10” of rain possible across South Texas with isolated totals higher amounts of 15”
- Impacts could include several evacuations and the flooding of some structures

Current Flood Status

Hurricane Hanna



Corpus Christi
WEATHER FORECAST OFFICE



- Coastal tide gauges show minor to moderate flooding from storm surge

Main Take-Aways

Hurricane Hanna



Corpus Christi
WEATHER FORECAST OFFICE

- Hanna made two landfalls earlier this afternoon on Padre Island and Kenedy County
 - Hanna continues to move south, but Tropical-Storm-Force winds remain across much of the Coastal Bend and a Tropical Storm Warning is in effect
- Main concerns with Hanna tonight will be heavy rain threat in bands, gusty winds, storm surge, and brief tornado/waterspout threat
- Still have to keep an eye on the tropics after Hanna

Active Watches and Warnings

- A Tropical Storm Warning is in effect from Baffin Bay to Port O'Connor
 - Victoria and Goliad Counties have been removed from the warning
- A Flash Flood Watch remains in effect for most of South Texas
- A Storm Surge Warning remains in effect from Port Mansfield to Sargent



The Final Webinar: Sunday 10:30 AM CT



Web: <http://weather.gov/CorpusChristi>



Phone: (361) 289-0959



E-mail: sr-crp.awareness@noaa.gov



Facebook: NWSCorpus



Twitter: NWSCorpus



YouTube: NWSCorpus

For the latest graphics and information go to: www.hurricanes.gov or weather.gov/crp/tropical